

The project concerns the **informal settlement of a Roma community situated in via Bonfadini, Milan.**

The informal settlement grow up on a regular camp area for nomad people but community, that is living there, is no more nomadic. The caravans are progressively modified and they become self-built houses. The community is today constituted by families where often men are in prisons, and so there are a group of women alone with childrens, that request to be helped to improve theirs skills.

The site is placed in a triangle between three railroads and beside an industrial area. The fields around are used as abusive garbage dump and by criminal organization. The informal settlement does not have common spaces, and the children's do not have space to play. The community live in a very isolated and poor situation.

The goal is to **upgrade the living conditions of the community, and to foster the relationship between the families of the communities and the neighbors, breaking the actual physical and social isolation.**

The project aims to involve the community in a participatory process, starting from the children's and the group of womens, to build a playground inside the settlement and to promote the cleaning and the reuse of the fields around the settlement. The common has the purpose to be used as an interface between the community and the neighbors.

THE CAMP SURROUNDINGS AND CAMP INSIDE

SOCIAL COMPOSITION



CRITICAL ISSUES

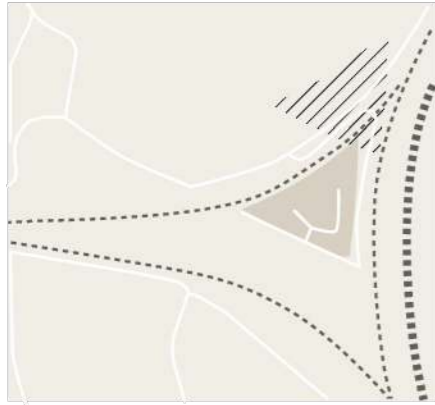
<p>LOCATION between rails only access via underpass</p>	<p>INNER ORGANIZATION lack of common spaces garbage and degraded spaces</p>	<p>ENERGY ISSUE no connection to gas supply line garbage and degraded spaces</p>
ISOLATION SECURITY	INDIVIDUALISM CONFLICTS UNSAFETY MISEDUCATION	CONSUMPTION UNSAFETY IRRESPONSIBILITY

ERSILIA INFORMALE BONFADINI

ASFITALIA ONLUS, S. Nessi F. Albertoni M. Olivieri M. Saletta M. Tommaseo

UPGRADE LIVING SPACE THROUGH COMMON SPACES

built area



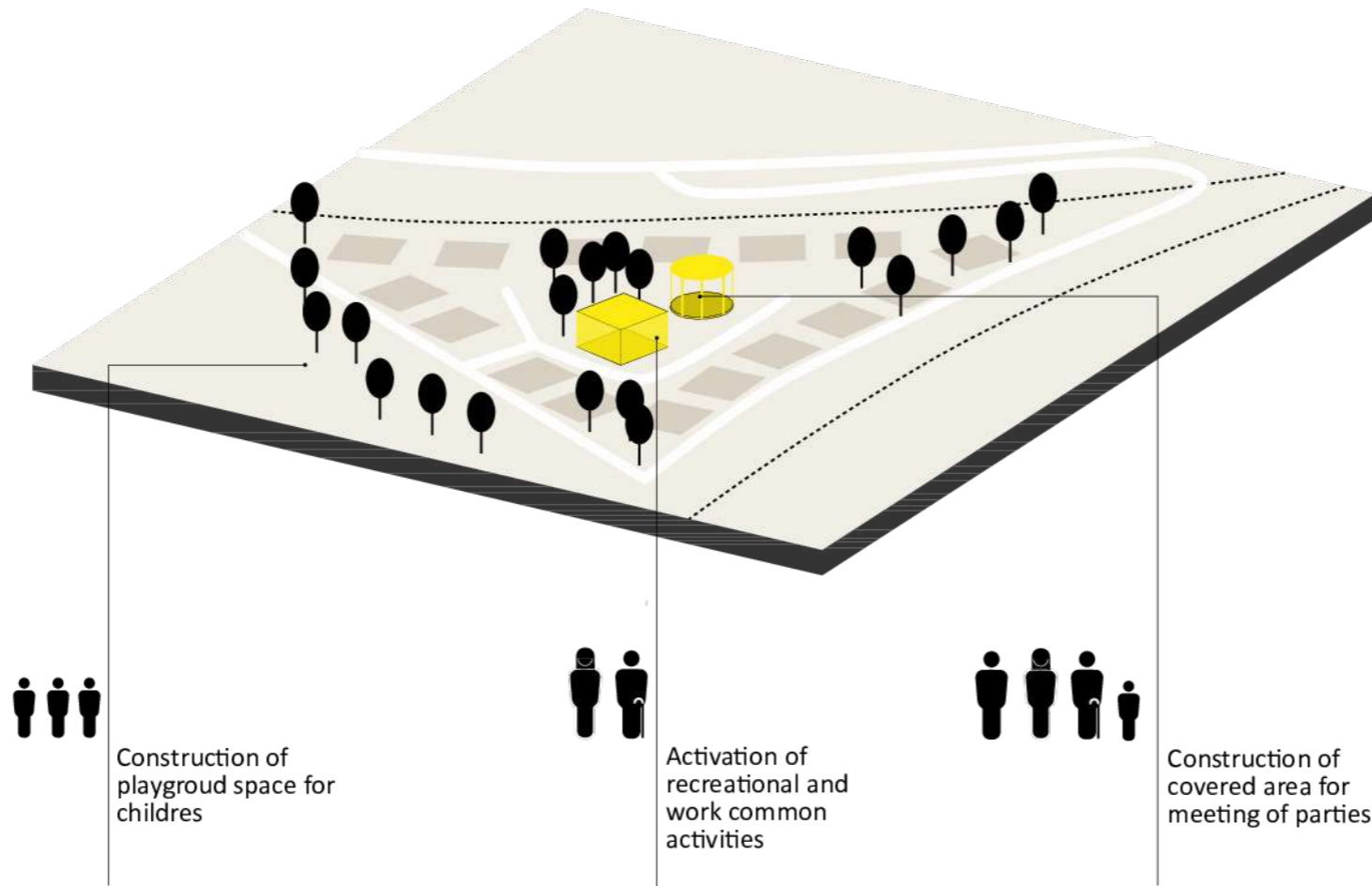
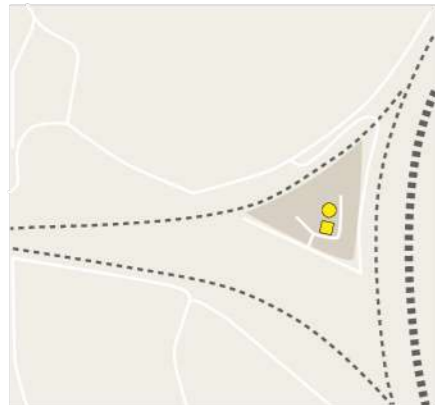
green area



area with waste presence



degraded commons



CRITICAL ISSUE: VULNERABILITY-INSECURITY

ANSWER: UPGRADE LIVING SPACE

POINT 10-HASSEL CHART: *Defend, promote and enable access to adequate and dignified habitat for all as a 'Fundamental Human Right.*

The camp is a sum of small one family self-built houses, without any common spaces, in a worst abandoned peri-urban context . In the center of the area there is an old abandoned hall and an old abandoned toilets that are actually used as a storage by some of the families. Some conflicts burns from the use of those common spaces and for this reason they are in bad conditions.

The childrens and womens who live all the day in the camp, don't have a place to stay together. Especialy the childrens are used to play between the cars, the rubbish and inside the deposits. Concerning to this situation the "Padri Somaschi" association, our project partner, is already working into the camp to foster the schooling of the children and to allow them to spend some times outside the camp in children's spaces.

The project, according with the point number ten of the Hasselt Chart, promote the upgrading of the living conditions by the renewal of the existing commons and opens spaces.

In particular the project promotes the production of a social space for childrens.

First of all, working with the group of childrens that already go to school, the project will activate **participatory process to imagine the scenario for the use of the commons and opens spaces** and, in a second step, will encourage the self-renewal of them with the families of the community.

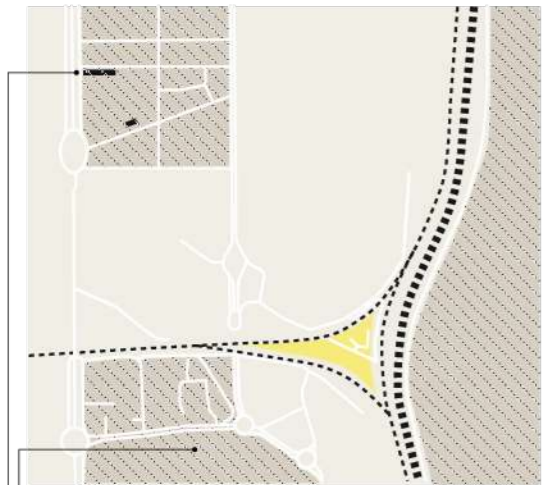
ERSILIA INFORMALE BONFADINI

ASFITALIA ONLUS, S. Nessi F. Albertoni M. Olivieri M. Saletta M. Tommaseo

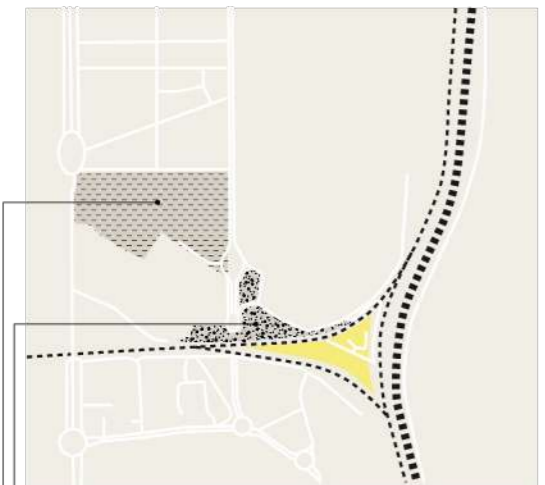
BREAKING ISOLATION THROUGH COMMON SPACES



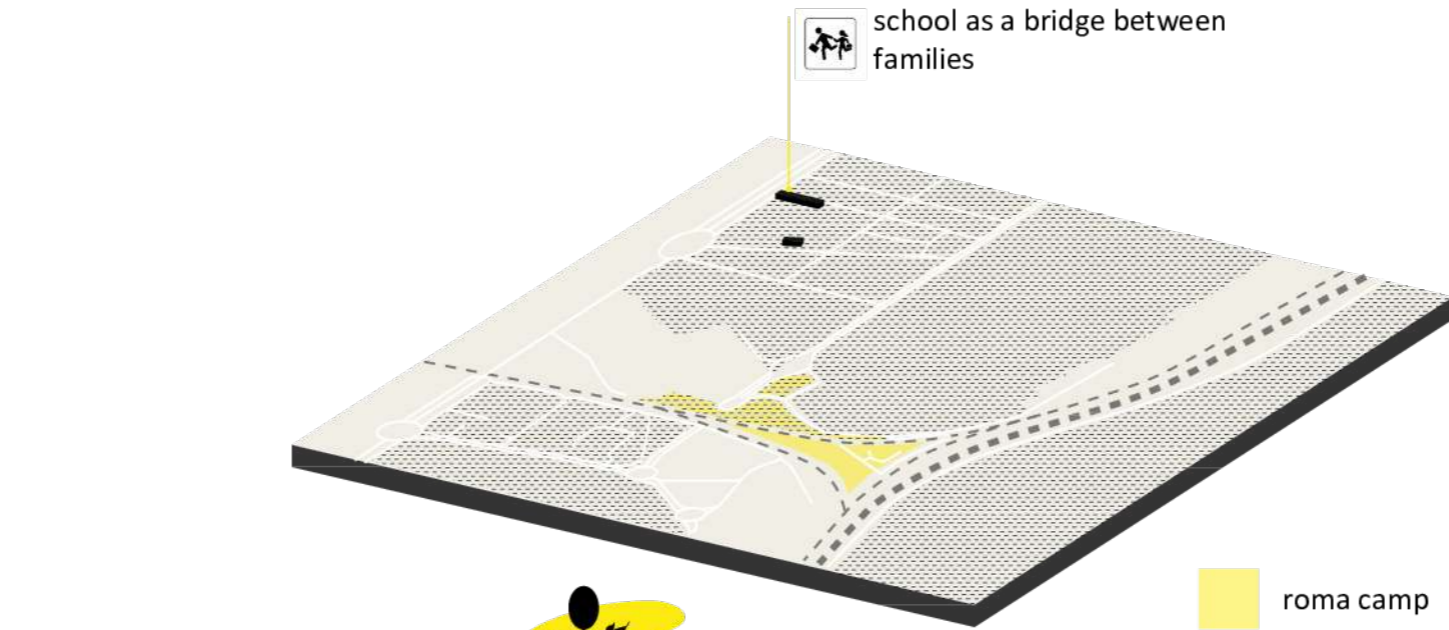
fruit and vegetable market
railway



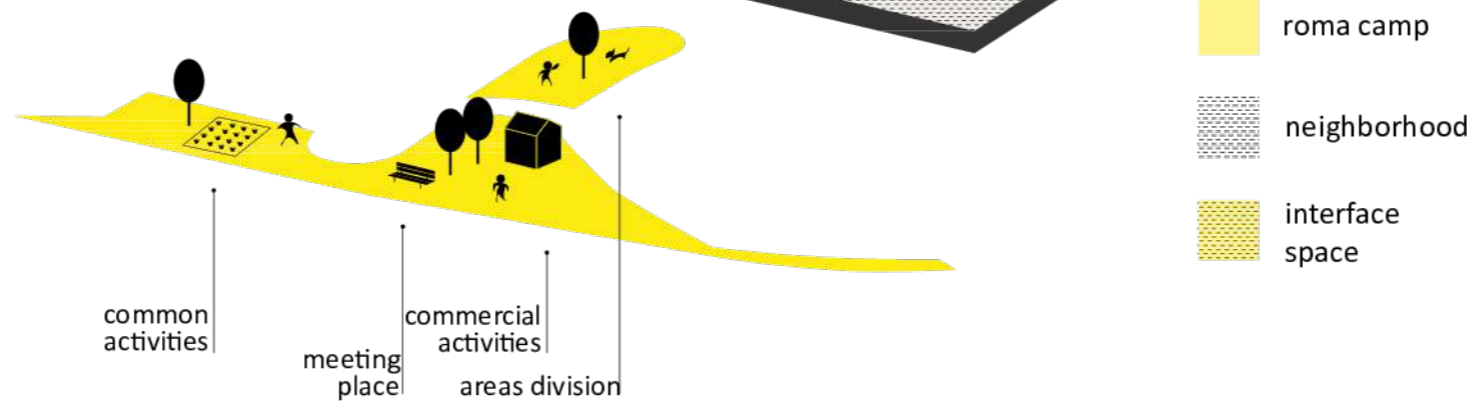
primary and middle school
residential area



Alessandrini Park
abandoned green field



school as a bridge between families



- roma camp
- neighborhood
- interface space



CRITICAL ISSUE: DISCRIMINATION-ISOLATION

ANSWER: BREAKING ISOLATION

POINT 1-HASSELL CHART: *Cooperate for fair and sustainable development initiatives in active collaboration with disadvantaged people or communities. This process shall follow principles of human solidarity, non-discrimination and will be aimed at promoting their self-sufficiency.*

The camp's Roma community lives in a **discriminatory situations** due to cultural and economic conditions. The families of via Bonfadini are used to be **isolated and to don't have any relation with the neighbors.**

The abandoned fields, that actually separate the informal settlement from the residential neighborhood, are covered by garbage. Those areas, used as an abusive garbage dump and as a criminal organization, play a key role of social barrier between the community and their far neighbors. In the other hand, inside this camp, some men of the community build repair's laboratories activities to their own use. At the border with those areas there is a public park with a big temporary market place to sell used things.

The project, according with the first point of the Hasselt Chart, **develops a self-improving process with ten families of the Roma community, promoting the re-use of an area near the single access to the camp, as a resource to be transformed and re-activated in relationship with the residential neighborhood and with the market place and the public park.**

The community will be encouraged to take care of this space implementing on it their own skills.

ERSILIA INFORMALE BONFADINI

ASFITALIA ONLUS, S. Nessi F. Albertoni M. Olivieri M. Saletta M. Tommaseo

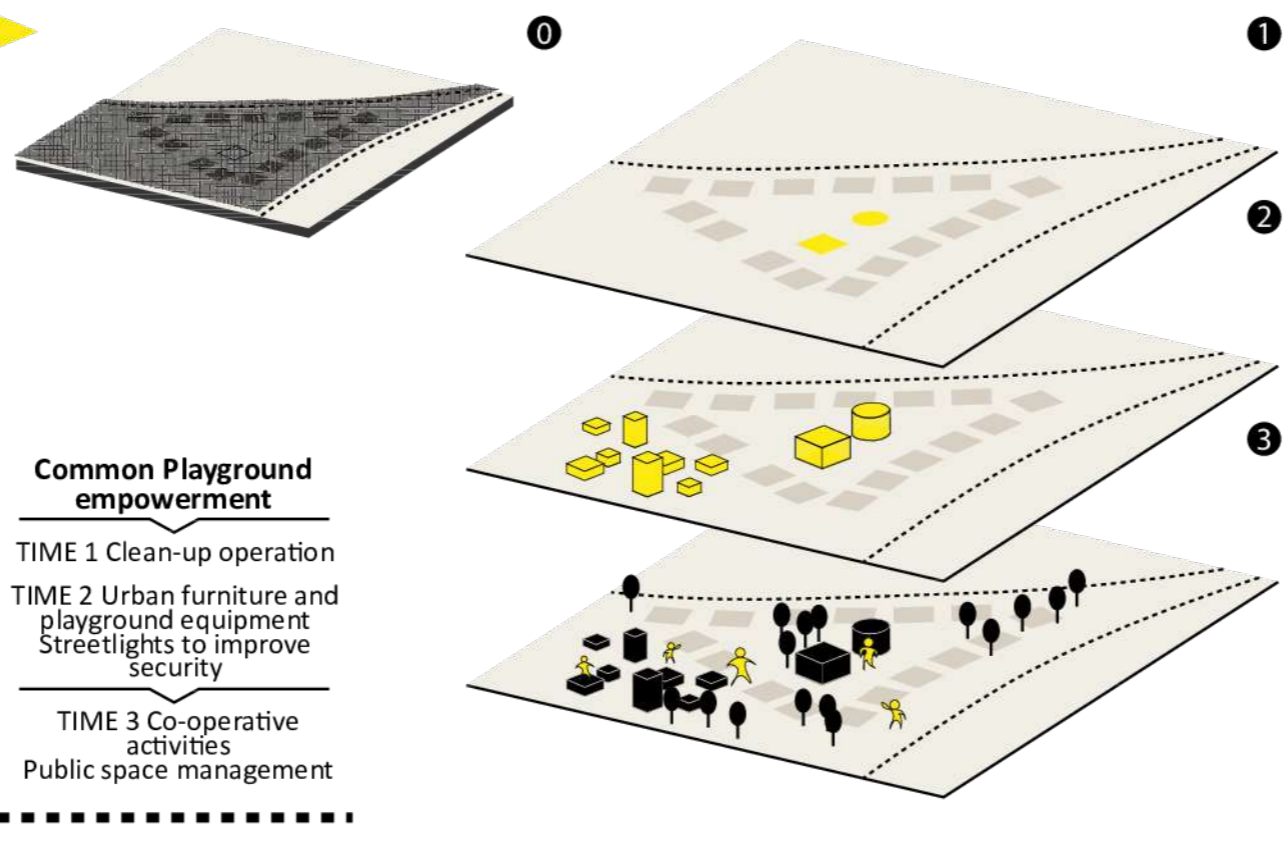
STEP ONE COMMON PLAYGROUND

roma families participation process to upgrade common spaces
 + Padri Somaschi
 ASFItalia



By improving the public space, it increases social cohesion and responsibility within the community.

Planning project; it connects the people who live in the neighborhood.



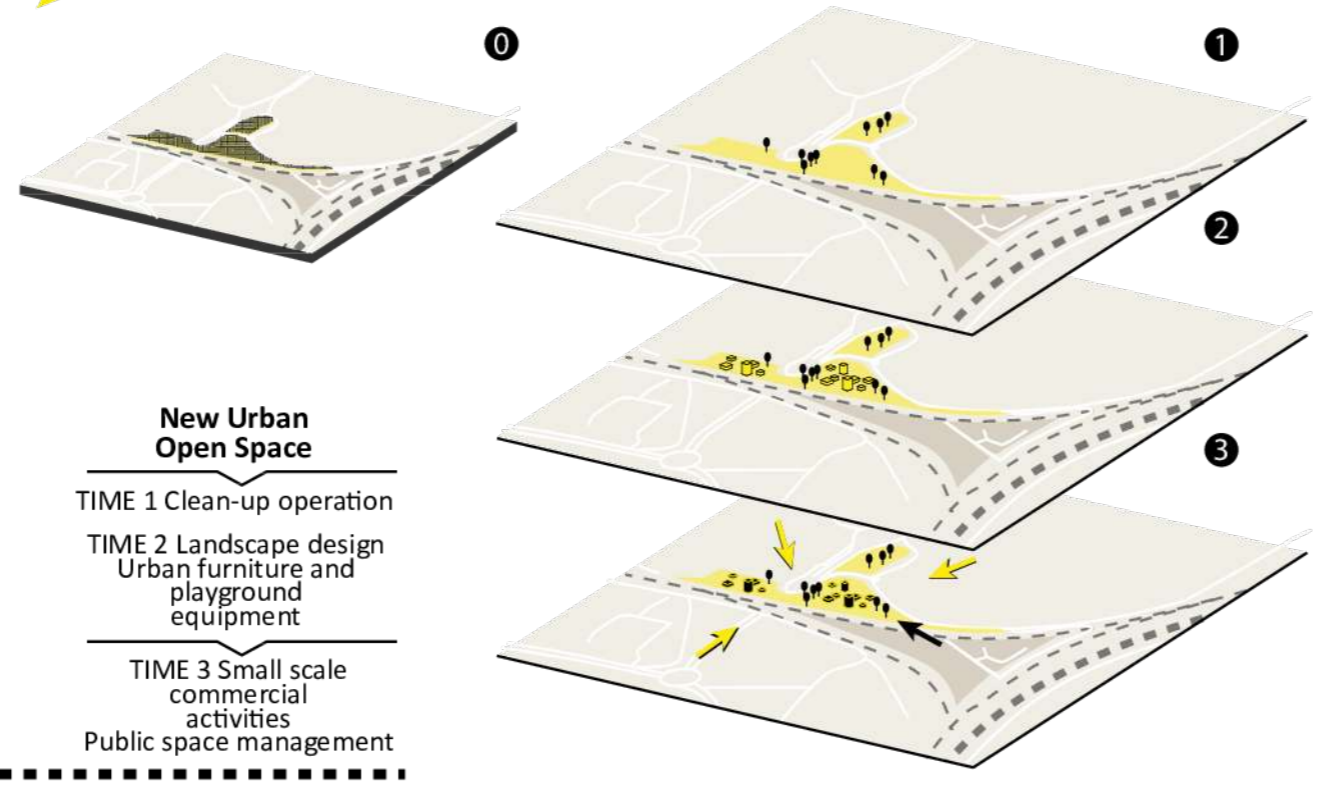
STEP TWO NEW URBAN OPEN SPACE

roma families participation process to upgrade common spaces
 + Padri Somaschi
 ASFItalia



By improving the public space, it increases social cohesion and responsibility within the community. To improve the skills of the women and the men and to disseminate their values inside the social context

FUTURE STEP
 Reach the empowerment of the community and promote self-sufficiency and responsible energy systems



CRITICAL ISSUE: LACK OF OPPORTUNITY

ANSWER: EMPOWRMENT

POINT 8-HASSEL CHART: *Support participatory, democratic, multicultural and interdisciplinary processes and approaches in strengthening community solidarity as a factor of rural and urban social development.*

The actions of the project will be focused on a **participatory process that will involve the Roma Community and the neighborhood's communities to implement skills and knowledge sharing opportunities.**

The goal of the participatory process is the empowerment of the Roma community living in the Via Bonfadini camp. The first action proposed will involve the children and their families in a participatory process that aims to project the commons and opens space of the camp. Using some plays the associations team's will drive the childrens to individuate some scenarios that will be sharing, in a second moment, in their school classes to be implemented with their schoolmates visions.

The second action proposed aims to involve the institutions and the association, working beside the camp area in a participatory process with the Roma community, to project the re-use of the area beside the public park and the underpass used to enter in the camp. Starting from the partecipatory process the team will drive up a group, composed of Roma community and neighborhood's families, who will be responsible to take care of the field, to realize the project and to implement inside the camp some new activities

The goal will be to improve the skills of the women and the men and to disseminate their values inside the social context.

ERSILIA INFORMALE BONFADINI

ASFITALIA ONLUS, S. Nessi F. Albertoni M. Olivieri M. Saletta M. Tommaseo